



Version 1.3

VIVID

LIGHT STRIP

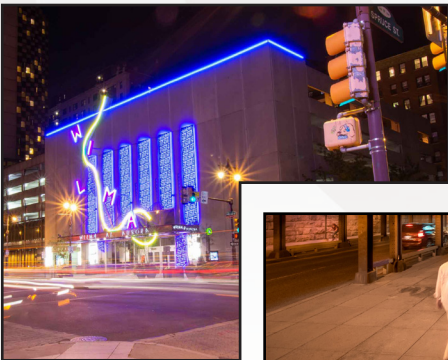
RGB

PVC 24V



For More Information

Toll Free: 1 (888) 580-6366



UNITED STATES

Pacific Business Center
1075 American Pacific Dr.,
Ste. A Henderson, NV 89074

CANADA

264 Botsford Street,
Suite 200 Moncton, NB
E1C 4X7

GILLS reserves the right to make any design changes for continuous improvement which will not affect the overall appearance or performance.

www.gills.com
www.ledneonflex.com

Output	RGB (9 LEDs/ft (30 LEDs/m))	RGB (18 LEDs/ft (60 LEDs/m))
LED Light	SMD LED Chip	SMD LED Chip
Max Run Length		
Single Feed	Full Load: 45.92ft (14m) Dynamic Load: 65.62ft (20m)	Full Load: 22.96ft (7m) Dynamic Load: 32.81ft (10m)
Double Feed	Full Load: 91.84ft (28m) Dynamic Load: 131.2ft (40m)	Full Load: 45.92ft (14m) Dynamic Load: 65.62ft (20m)
Light Surface	Flat profile 160°	
Lumen Maintenance	70,000 Hours L70 @ 25°C : 90,000 L50 @ 25°C 50,000 Hours L70 @ 50°C : 70,000 Hours L50 @ 50°C	
Electrical		
Input Voltage	24V DC	24V DC
Power Consumption	1.83W/ft (6W/m)	3.66W/ft (12W/m)
Physical		
LED Count	9 LEDs/ft (30 LEDs/m)	18 LEDs/ft (60 LEDs/m)
LED Spacing	1.31in (33.3mm)	0.66in (16.67mm)
Cutting Unit Length	7.87in (200mm) (6 LEDs)	3.94in (100mm) (6 LEDs)
Thermal Management	Free air convection	
Fixture Connections	End, side & bottom lead wires	
Minimum Bend Diameter	1.97in (50mm) (Top Bending)	
Temperature Ranges		
Installation	32°F to 113°F (0°C to 45°C)	
Operating	-4°F to 113°F (-20°C to 45°C)	
Humidity	0-95% non condensing	
Dependability		
Warranty	5 Year Limited Warranty	
Safety		
Certification	Tested to UL & CSA by Underwriters Laboratory for use in USA and Canada, complies with California Title 24 Requirements, Lighting Facts. Exceeds ANSI C78.377A, CE & RoHS Compliant.	
IP Rating	IP67 with appropriately rated accessories	

*Max Runs Length:

1. If Max Runs Length is over 65.62ft(20m), recommended maximum length for one run will be 65.62ft(20m) for handling capability.

Available Colors

Color	CCT Wavelength
Red	618-624nm
Green	522-528nm
Blue	468-474nm
R+G+B	N/A

18 LEDs/ft (60 LEDs/m)

Available Colors

Color	CCT Wavelength
Red	618-624nm
Green	522-528nm
Blue	468-474nm
R+G+B	N/A

Lumen Count

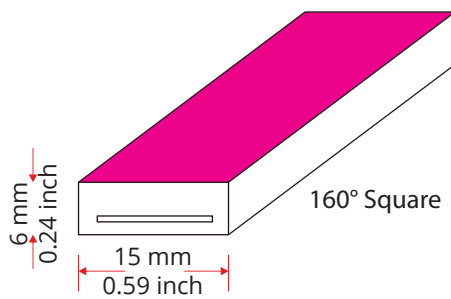
Color	Per Foot	Per Meter	Power
Red	>13lm	>43lm	/
Green	>35lm	>115lm	/
Blue	>6lm	>20lm	/
R+G+B	>54lm	>178lm	1.83W/ft (6W/m)

Lumen Count

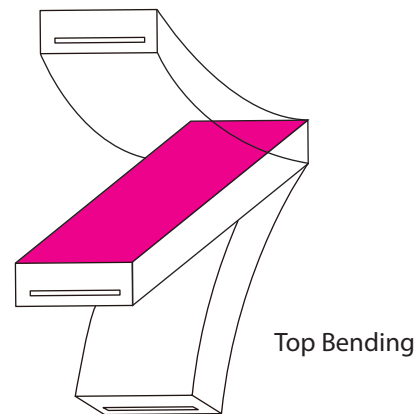
Color	Per Foot	Per Meter	Power
Red	>26lm	>85lm	/
Green	>70lm	>230lm	/
Blue	>12lm	>40lm	/
R+G+B	>108lm	>355lm	3.66W/ft (12W/m)



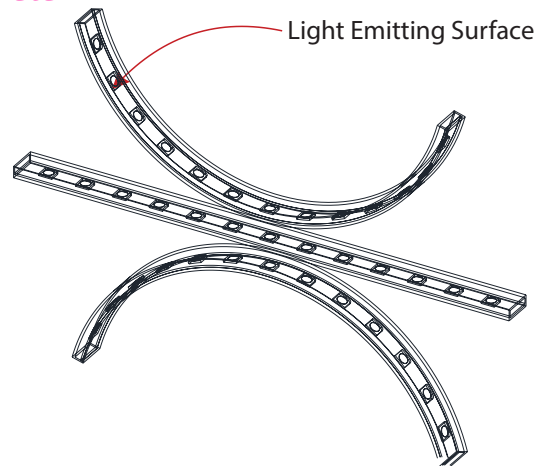
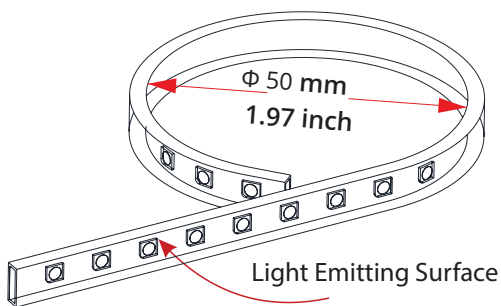
Light Profile



Bending Direction

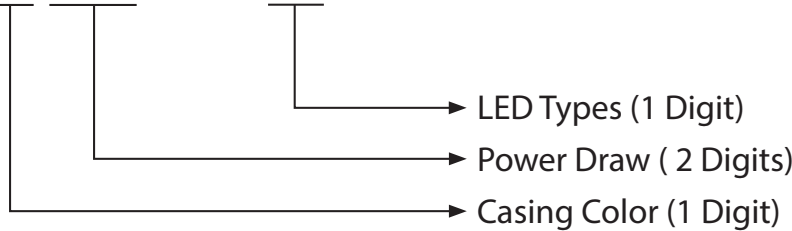


Minimum Bending Diameter



Fixtures

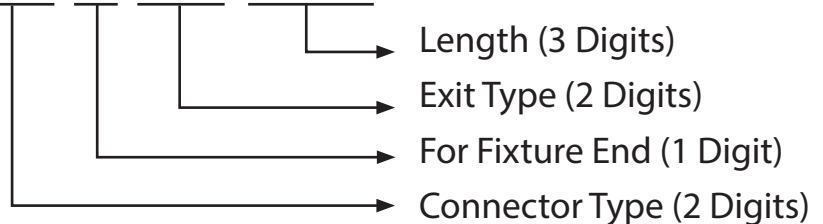
LS-15G-X-XX-4W-X-RGB-24DV



Casing Color	Power Draw	LED Types
C - Clear	12 - 12W/m	E - Epistar
B - Black	06 - 6W/m	N - Nichia
W - White		

Lead Connector

SA-15G-I-00-4W-XX-X-XX-XXX-S



Connector Type (2 Digits)	For Fixture End (1 digit)	Exit Type (2 digits)	Length (3 digits)
SC - Snap Connector	1 - Input side	EN - End	0M3 - 0.98ft (30cm)
SE - Seamless	2 - Output side	BO - Bottom	01M - 3.28ft (1m)
SU - Submersible	0 - Jumpers/T-Feeds/ Seamless (or Submersible) Bottom/Seamless (or Submersible) End	SL - Side left	03M - 9.84ft (3m)
		SR - Side right	05M - 16ft (5m)
		EJ - End jumper	10M - 32.81ft (10m)
		BJ - Bottom jumper	000 - For End Cap
		TF - Power T feed	
		EC - End Cap	

For full part number naming rules, please refer to the document on www.glls.com/support/documentation/

IP67: Rated for wet locations, not submersion. Factory Assembly only.

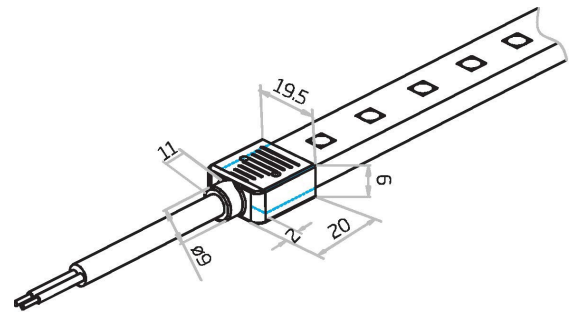


Seamless



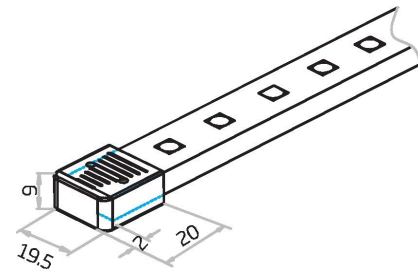
Seamless End Exit

SA-15G-I-00-4W-SE-0-EN-XXX-S



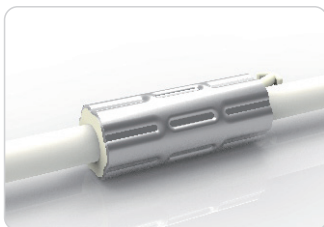
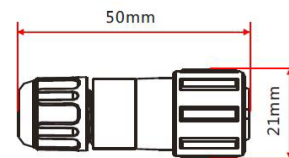
Seamless End Cap

SA-15G-I-00-0W-SE-1-EC-000-P
SA-15G-I-00-0W-SE-2-EC-000-P



Male & Female Connectors

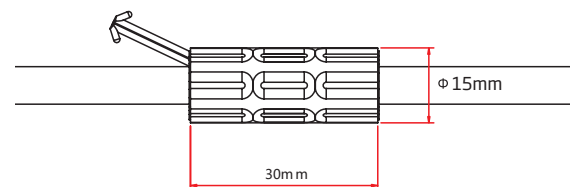
NA-XX-BC-DC-CXX-F
NA-XX-BC-DC-CXX-M
NA-XX-BN-XXA-CXX-F
NA-XX-BN-XXA-CXX-M
NA-XX-PL-XXA-CXX-F
NA-XX-PL-XXA-CXX-M



Anti-Wicking Ferrule

The anti-wicking ferrule is located 115mm (±5mm tolerance) from the connector cable.

For protection against water ingress inside of cable wire hence damage the light.

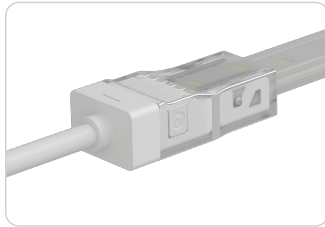


Warranty Void if Junction Removed

IP67: Rated for wet locations, not submersion. Factory Assembly only.

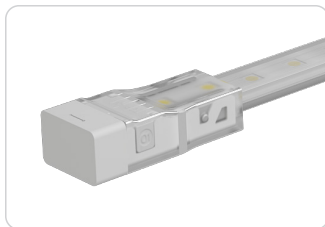
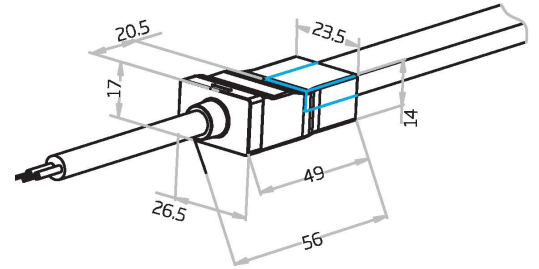


Snap Connectors



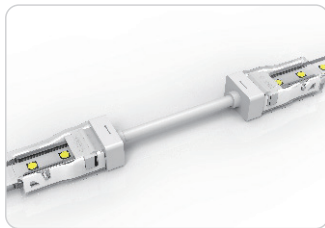
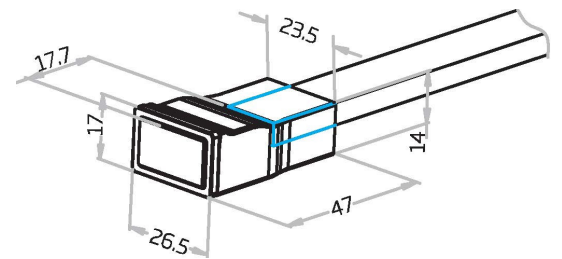
Snap End Exit

SA-15G-I-00-4W-SC-1-EN-XXX-S
SA-15G-I-00-4W-SC-2-EN-XXX-S



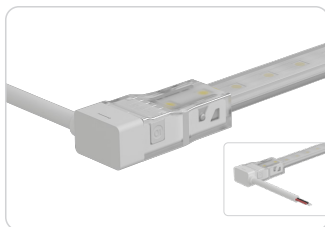
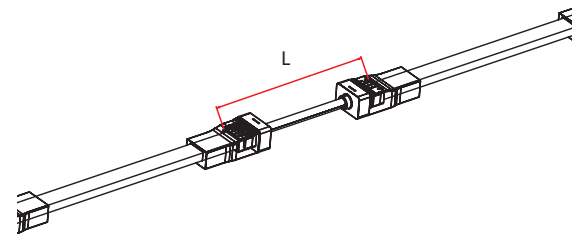
Snap End Cap

SA-15G-I-00-0W-SC-1-EC-000-P
SA-15G-I-00-0W-SC-2-EC-000-P



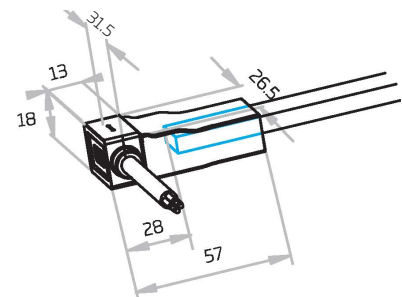
Snap Jumper

SA-15G-00-1-4W-SC-0-EJ-XXX-S



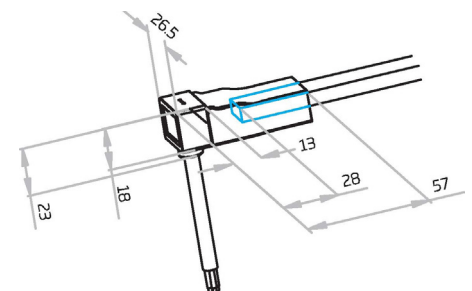
Snap Side Exit

SA-15G-I-00-4W-SC-1-SR-XXX-S
SA-15G-I-00-4W-SC-1-SL-XXX-S
SA-15G-I-00-4W-SC-2-SR-XXX-S
SA-15G-I-00-4W-SC-2-SL-XXX-S

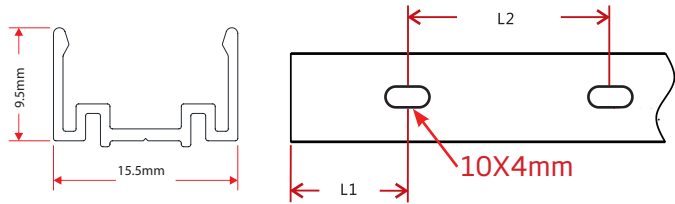
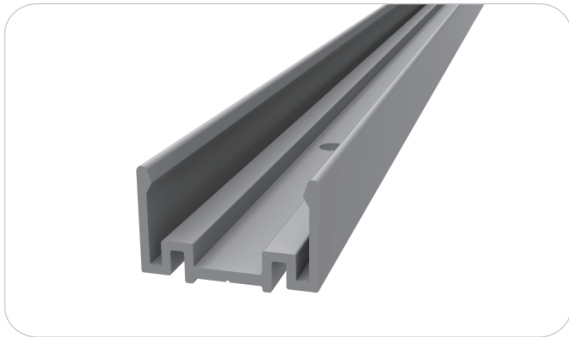


Snap Bottom Exit

SA-15G-I-00-4W-SC-1-BO-XXX-S
SA-15G-I-00-4W-SC-2-BO-XXX-S

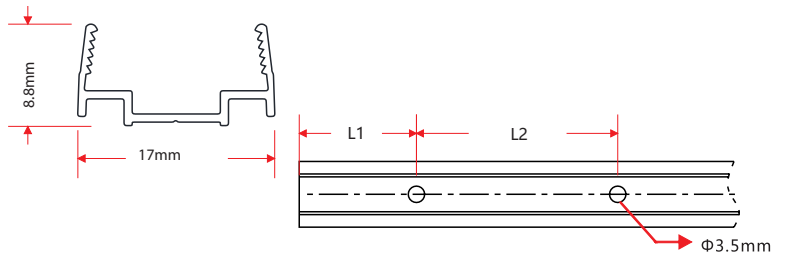


Standard Anodized Aluminum Channel



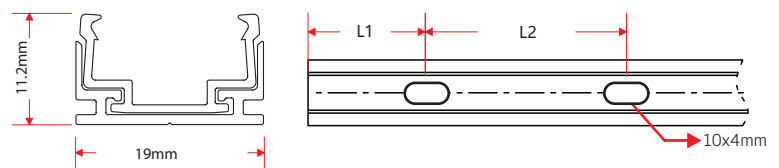
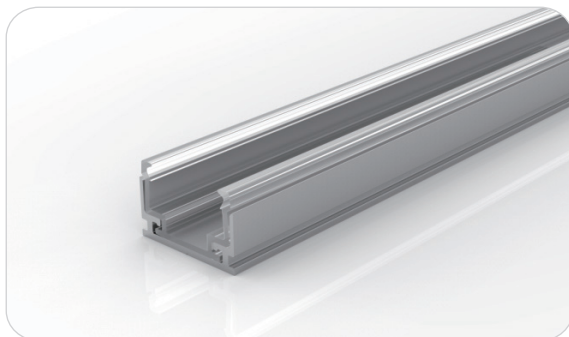
W x H	Standard Length	Part Number	L1	L2	Screw Hole Φ	Hole #
0.54 x 0.87in (13.8 x 22mm)	1.38in (35mm)	CL-15-R-AL-3C5-SD	0.69in (17.5mm)	/	0.39in x 0.16in (10 x 4mm)	1
	19.69in (500mm)	CH-15-R-AL-0M5-SD	1.97in (50mm)	7.87in (200mm)	0.39in x 0.16in (10 x 4mm)	3
	39.37in (1000mm)	CH-15-R-AL-01M-SD	3.94in (100mm)	7.87in (200mm)	0.39in x 0.16in (10 x 4mm)	5
	78.74in (2000mm)	CH-15-R-AL-02M-SD	3.94in (100mm)	7.87in (200mm)	0.39in x 0.16in (10 x 4mm)	10

Plastic Channel



W x H	Standard Length	Part Number	L1	L2	Screw Hole Φ	Hole #
0.55 x 0.94in (14 x 24mm)	19.69in (500mm)	CH-15-R-PL-0M5-SD	1.97in (50mm)	7.87in (200mm)	$\Phi 0.14$ in (3.5mm)	3
	39.37in (1000mm)	CH-15-R-PL-01M-SD	3.94in (100mm)	7.87in (200mm)	$\Phi 0.14$ in (3.5mm)	5
	78.74in (2000mm)	CH-15-R-PL-02M-SD	3.94in (100mm)	7.87in (200mm)	$\Phi 0.14$ in (3.5mm)	10

Plastic & Aluminum Channel



W x H	Standard Length	Part Number	L1	L2	Screw Hole Φ	Hole #
0.55 x 0.59in (14 x 14.7mm)	1.38in (35mm)	CL-15-R-AP-3C5-SD	0.69in (17.5mm)	/	0.39in x 0.16in (10 x 4mm)	1
	19.69in (500mm)	CH-15-R-AP-0M5-SD	1.97in (50mm)	7.87in (200mm)	0.39in x 0.16in (10 x 4mm)	3
	39.37in (1000mm)	CH-15-R-AP-01M-SD	3.94in (100mm)	7.87in (200mm)	0.39in x 0.16in (10 x 4mm)	5
	78.74in (2000mm)	CH-15-R-AP-02M-SD	3.94in (100mm)	7.87in (200mm)	0.39in x 0.16in (10 x 4mm)	10

Certifications

	Testing Organization	Certificate Serial N°	Report Reference
UL 2108	UL	20160726-E360029	E360029-2013
CE-EMC	SGS	SZEM1702001259LMV	SZEM160600421302

Fixture Testing

Optical Testing

Spectrum Analysis	IES LM 79 (Lumen, CCT, CRI, XY, SDCM, wavelength)
Photometric Distribution	IES LM 73 (Lumen intensity distribution & Lux diagram)
Lumen Maintenance & Lifetime	IES LM 84 & IES TM28

Temperature Testing

Normal Temperature Test	UL1598 & UL2388 & IEC60598-1 & IEC60598-2-21
Abnormal Operation Test	UL1598 & UL2388 & IEC60598-1 & IEC60598-2-21

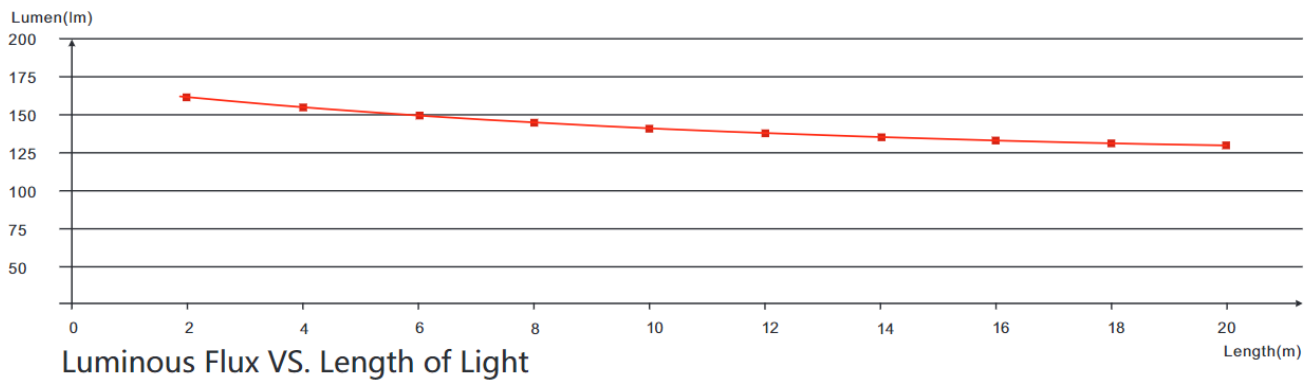
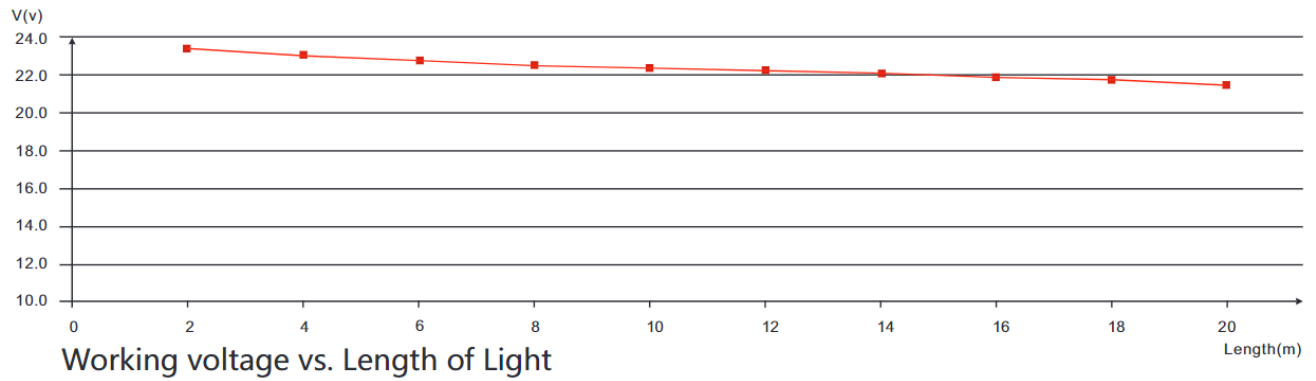
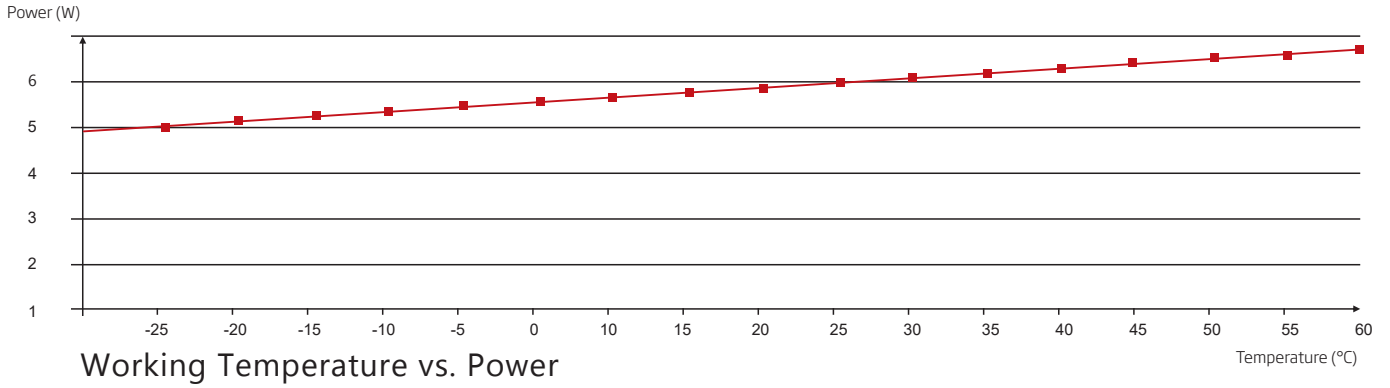
Durability Testing

Bending Test	Manufacturer-defined, 500 cycles
Swing Test	UL2388, >750 cycles
Tensile Test	Manufacturer-defined, > the weight of light in max. connection length double feed
Twist Test	Max connection length double feed Manufacturer-defined, >200 cycles
Ball Impact	UL1598 & UL2388 & IEC60598-1 & IEC60598-2-21
IK07 IK08	IEC62262

Environmental Testing

Chlorinated Water Immersion	BG9667, PH6.8-7.6, free chlorine 0.3-0.6mg/L
Salt Water Immersion	IEC60598-1, Salinity 4%
Salt Spray Test	IEC68-2-11
Outdoor Exposure	Manufacturer-defined
Flame Resistance	UL94
UV Exposure	ASTMG 154, ISO 4892-3, UVA @ 340nm
IPX5, IPX6, IPX7, IPX8	IEC60529
Temperature Shock	Manufacturer-defined, -40°C - 60°C (typical temperature range)
Constant Temperature	Manufacturer-defined

Charts



Charts

ANSI STANDARD

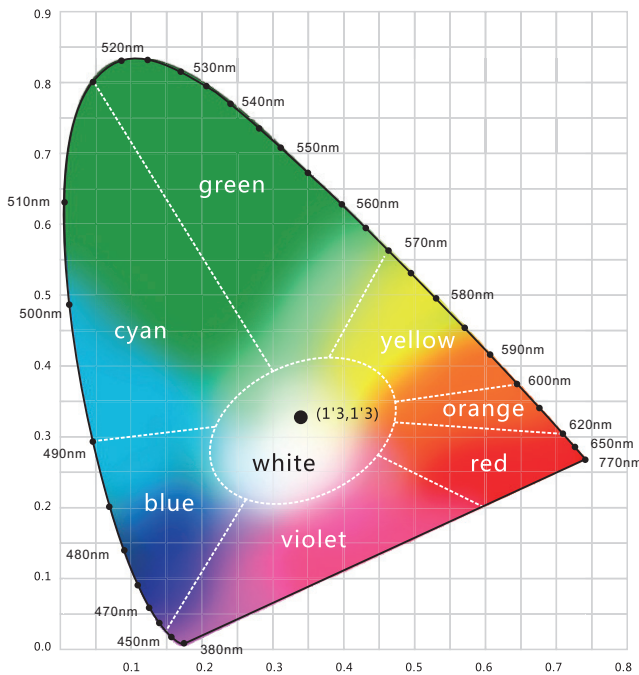
Nominal CCT Categories

Nominal CCT	Target CCT and tolerance(K)	Target D_{uv}	D_{uv} Tolerance Range
2200K	2238 ±102	0.0000	Tx:CCT of the source
2500K	2460±120	0.0000	For Tx<2870K
2700K	2725 ±145	0.0000	0.000±0.0060
3000K	3045±175	0.0001	For Tx≥2870K
3500K	3465±245	0.0005	$D_{uv}(Tx)±0.0060$
4000K	3985±275	0.0010	where
4500K	4503±243	0.0015	$D_{uv}(Tx)=57700 \times (1/Tx)2$
5000K	5029±283	0.0020	-44.6 x (1/Tx)
5700K	5667±355	0.0025	+0.00854
6500K	6532±510	0.0031	

Remark:

- 1) T_f is chosen to be at 100K steps (2300,2400,.....,6400K),excluding the ten nominal CCTs listed in Table 1.
- 2) $\Delta T=1.1900 \times 10^8 \times T^3 - 1.5434 \times 10^4 \times T^2 + 0.7168 \times T - 902.55$
- 3) Same as in the D_{uv} Tolerance Range.

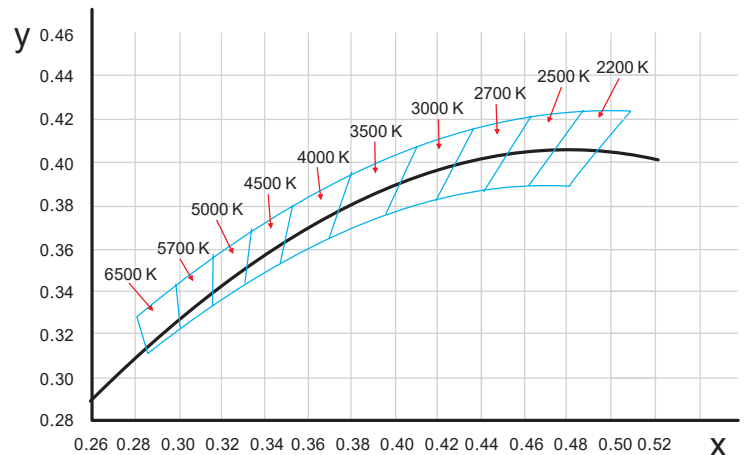
Flexible CCT (2200-6500K)	$T_f^{(1)} \pm \Delta T^{(2)}$	$D_{uv} T_f^{(3)}$
---------------------------	--------------------------------	--------------------

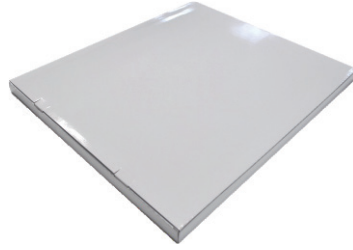
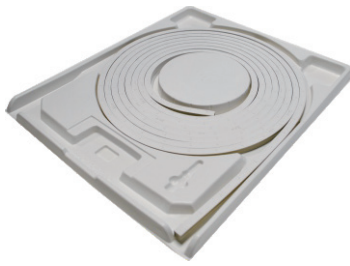


Light Color



(X,Y) Chromaticity Diagram





White Box

Packing Box

Fixture Length	White Box Dimensions	Packing Box Dimensions	# Of White Boxes	Package Weight
196.85in (5m)	15.35x2.05x19.67in (39x5.2x50cm)	20.47x15.34x11.02in (52x41x28cm)	5	30.86lbs (14kg)
393.7in (10m)	20.08x2.05x24.41in (51x5.2x62cm)	25.2x20.87x11.02in (64x53x28cm)	5	57.32lbs (26kg)
393.7in (10m)	20.08x2.05x24.41in (51x5.2x62cm)	25.2x20.87x6.9in (64x53x17.5cm)	3	35.27lbs (16kg)
787.4in (20m)	26.77x2.05x31.1in (68x5.2x79cm)	31.9x27.56x4.92in (81x70x12.5cm)	2	48.5lbs (22kg)